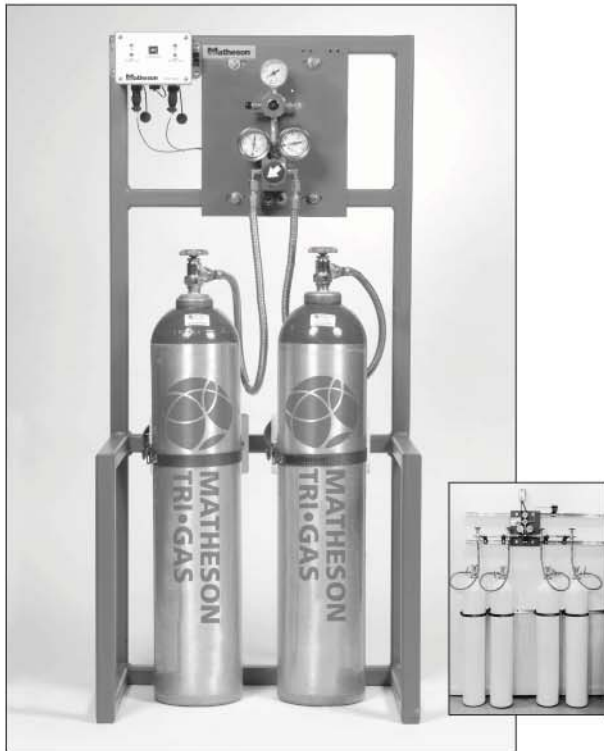




SwitchPro™ Automatic Switchover Systems (523 & 524 Series)



The SwitchPro™ Automatic Switchover System provides continuous gas delivery.

Introduction

Matheson's SwitchPro™ AUTOMATIC Switchover Systems are designed to provide a continuous supply of gas from a cylinder or a bank of cylinders. The SwitchPro™ System safely minimizes repetitive cylinder changeout labor and offers a safe and efficient method of connecting multiple cylinders to a common gas supply line to provide centralized distribution of gas for both high and low purity delivery requirements. Utilizing SwitchPro™ Manifold Systems for the distribution of gas provides greater safety in the cylinder storage area by reducing repetitive cylinder handling and also minimizes the risk of ambient contamination within the gas delivery network.

The SwitchPro™ Manifold Systems can be furnished in brass or stainless steel to provide delivery service for a broad range of gases, and are rated for pressures of up to 3000 psig. All SwitchPro™ Manifold Systems are single row configurations and are provided with 3-ft. flex hoses and integral check valves.

Applications

- Provide a continuous, uninterrupted supply of gas
- Control gas delivery from cylinders within a centralized distribution system providing safer and more efficient delivery of gas with the flexibility to address customized applications.

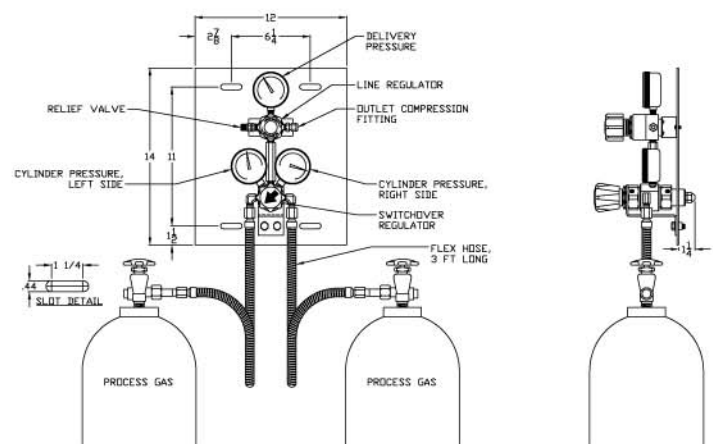
Design Features

- Ideal for High (UHP 99.999%+) or Low Purity gas delivery – available in brass or 316 stainless steel materials.
- Available control features include: pressure regulation and indicating pressure switches.
- Provides automated switchover control and gas delivery from '2' or '4' cylinders (standard) or up to '10' cylinders (optional).
- Utilizes Matheson's single body Switchover Regulator.
- Compact design minimizes wall space consumption.
- Switchover regulator knob indicates cylinder (bank) priority.
- Maximum inlet pressure up to 3000 psig.
- Design allows convenient access to all components.
- Cost effective to implement and install.
- Optional features allow customized system design for specific gas delivery applications.

Standard Features

- Single Body Switchover Regulator
- 3 ft. Flex Hoses
- Integral Check Valves
- Inlet Pressure Gauges
- 1/4" Outlet Compression Fitting
- Painted Steel Back Plate

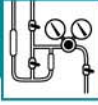
Typical SwitchPro™ System Dimensions



Microbiology
INTERNATIONAL

Global Innovation • Superior Support

5111 Pegasus Court, Suite H
Frederick, MD 21704
800-396-4276
www.800EZMICRO.com



SwitchPro™ Automatic Switchover Systems (523 & 524 Series) (continued)

Specifications

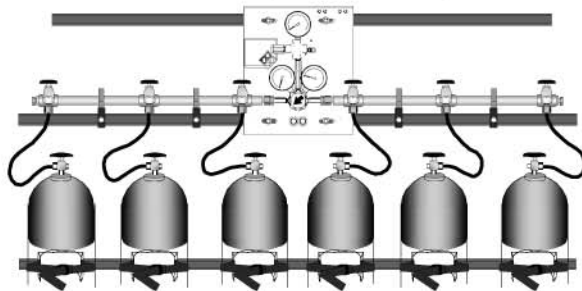
Standard Gases Delivered*:

Inerts	580 CGA
Flammables	350 CGA
Carbon Dioxide	320 CGA

**NOTE: The CGA's shown above represent common gases used in the laboratory environment and are not exclusive for use with the SwitchPro™ System. Many gases using CGA's other than those listed are compatible for use with SwitchPro™ Systems. Please consult a Matheson Tri-Gas customer service representative for ordering a SwitchPro™ System for a gas which is not listed.*

Switchover Panel Dimensions:	12" W x 14" H
Wetted Components:	Brass or 316 Stainless Steel
Switchover Regulator Cv	0.06
Maximum Inlet Pressure:	3000 psig (depending upon CGA rating)
Manifold Outlet Connection:	CGA Bushing – Brass or Stainless Steel

SwitchPro™ System Assembly



The SwitchPro™ System is easy to operate and can be customized using optional features. Shown with optional manifold piping and station valves. Standard configuration has flex hoses connected directly to the switchover panel.

Don't See What You Want Below?

Matheson offers a complete line of SwitchPro™ Automatic Switchover Systems. Our standard, most common configuration options are listed below. However, if you don't see what you're looking for, contact a Matheson Tri-Gas customer service representative and ask to speak with your local equipment sales support specialist. They can help you configure a SwitchPro™ System that meets your specific requirements.

Options include:

- Up to ten Cylinders
- Rigid Pigtails
- 6 ft. Flex Hoses
- Cylinder Holders
- Certified Leak Test
- Auxiliary Gas Inlet Valve
- 1/8", 3/8" or 1/2" Outlet Compression Fitting
- NFPA Label
- Indicating Pressure Switches
- High Pressure Vent Valves
- Low or High Pressure Isolation Valves
- Manifold Piping with Station Valves

Ordering Information

Model Number	Material	Gas / CGA	Line Regulator Pressure	No. of Cylinders	Model Number	Material	Gas / CGA	Line Regulator Pressure	No. of Cylinders
523-028T	Brass	Inert / CGA 580	No Line Reg	2	524-028T	Stainless Steel	Inert / CGA 580	No Line Reg	2
523-048TN	Brass	Inert / CGA 580	No Line Reg	4	524-048TN	Stainless Steel	Inert / CGA 580	No Line Reg	4
523-A28T	Brass	Inert / CGA 580	0-30 psig	2	524-A28T	Stainless Steel	Inert / CGA 580	0-30 psig	2
523-A48TN	Brass	Inert / CGA 580	0-30 psig	4	524-A48TN	Stainless Steel	Inert / CGA 580	0-30 psig	4
523-B28T	Brass	Inert / CGA 580	0-100 psig	2	524-B28T	Stainless Steel	Inert / CGA 580	0-100 psig	2
523-B48TN	Brass	Inert / CGA 580	0-100 psig	4	524-B48TN	Stainless Steel	Inert / CGA 580	0-100 psig	4
523-028V	Brass	Flammable / CGA 350	No Line Reg	2	524-028V	Stainless Steel	Flammable / CGA 350	No Line Reg	2
523-048VN	Brass	Flammable / CGA 350	No Line Reg	4	524-048VN	Stainless Steel	Flammable / CGA 350	No Line Reg	4
523-A28V	Brass	Flammable / CGA 350	0-30 psig	2	524-A28V	Stainless Steel	Flammable / CGA 350	0-30 psig	2
523-A48VN	Brass	Flammable / CGA 350	0-30 psig	4	524-A48VN	Stainless Steel	Flammable / CGA 350	0-30 psig	4
523-B28V	Brass	Flammable / CGA 350	0-100 psig	2	524-B28V	Stainless Steel	Flammable / CGA 350	0-100 psig	2
523-B48VN	Brass	Flammable / CGA 350	0-100 psig	4	524-B48VN	Stainless Steel	Flammable / CGA 350	0-100 psig	4
523-028W	Brass	Carbon Dioxide / CGA 320	No Line Reg	2	524-028W	Stainless Steel	Carbon Dioxide / CGA 320	No Line Reg	2
523-048WN	Brass	Carbon Dioxide / CGA 320	No Line Reg	4	524-048WN	Stainless Steel	Carbon Dioxide / CGA 320	No Line Reg	4
523-A28W	Brass	Carbon Dioxide / CGA 320	0-30 psig	2	524-A28W	Stainless Steel	Carbon Dioxide / CGA 320	0-30 psig	2
523-A48WN	Brass	Carbon Dioxide / CGA 320	0-30 psig	4	524-A48WN	Stainless Steel	Carbon Dioxide / CGA 320	0-30 psig	4
523-B28W	Brass	Carbon Dioxide / CGA 320	0-100 psig	2	524-B28W	Stainless Steel	Carbon Dioxide / CGA 320	0-100 psig	2
523-B48WN	Brass	Carbon Dioxide / CGA 320	0-100 psig	4	524-B48WN	Stainless Steel	Carbon Dioxide / CGA 320	0-100 psig	4